

DRAWING INFERENCES

READING BETWEEN THE LINES

By Megan Lin



**Inferences are not always correct,
but they are reasoned guesses.**

- An **inference** is a meaning that is **suggested** rather than directly stated.



- **Inferences** are **implied** through clues that lead you to make **assumptions** and draw **conclusions.**



A.) **Imply= to suggest**: The author **implies** something by giving you **context clues**.

B.) **Assume= to believe**: You make an **assumption** based on your beliefs and **prior knowledge**.

C.) **Infer= to conclude**: You draw (make) an **inference (conclusion)** based on the **context clues** and your **assumption**.

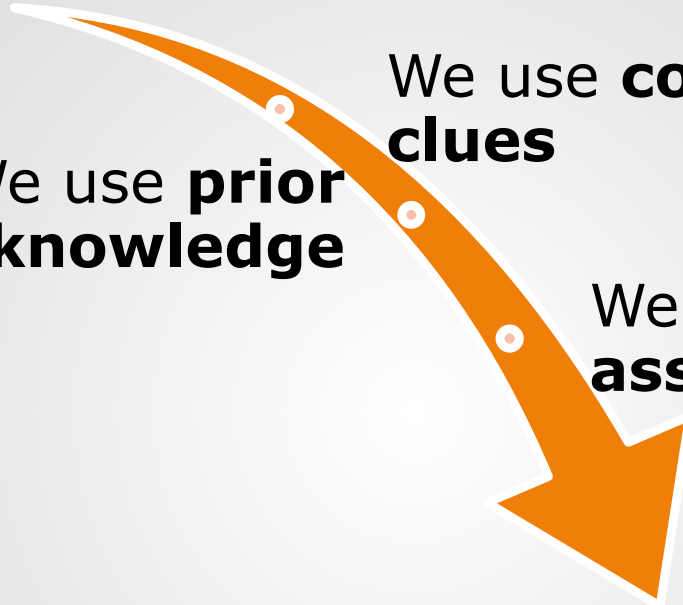
Author
implies

We use **prior
knowledge**

We use **context
clues**

We
assume

We draw an
INFERENCE



Sometimes

Different People = Different Inferences

Because

- They have different prior knowledge
- They have different points of view



- **Example:**

Situation: A man is lying in the gutter.

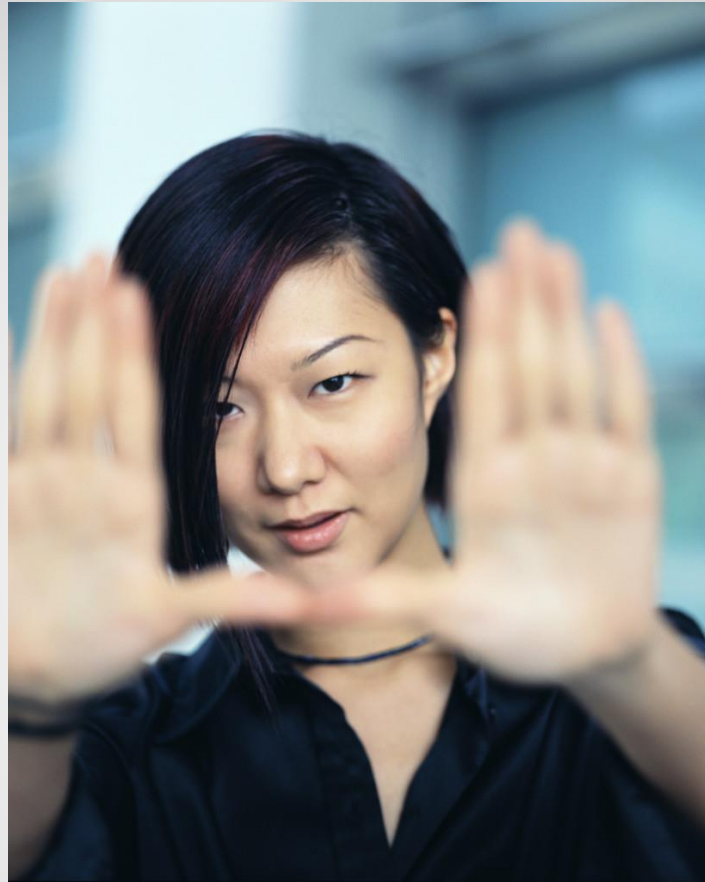
Person#1 Inference: That man's a bum.

Assumption: Only bums lie in gutters.

Person#2 Inference: That man needs help.

Assumption: Anyone lying in a gutter needs help.

You can see how Prior Knowledge and Assumptions (beliefs) play a role in making inferences.



How to Draw(Make) Inferences

1

- Understand the Literal Meaning

2

- Notice Details

3

- Add up the Facts

4

- Verify your Inference

Strategies for Drawing Inferences



Practice #1:

His nails dripped with blood. With his long, raspy tongue, he licked the sticky redness from them, one after another. A hunk of fur stuck to a tooth. The contented lion stretched out under the warm African sun and fell asleep still purring.

What can you infer?



1

- Understand the Literal Meaning

2

- Notice Details

3

- Add up the Facts

4

- Verify your Inference

Understanding Literal Meaning



Practice #1:

His nails dripped with blood. With his long, raspy tongue, he licked the sticky redness from them, one after another. A hunk of fur stuck to a tooth. The contented lion stretched out under the warm African sun and fell asleep still purring.

**Understanding Literal
Meaning**



1

- Understand the Literal Meaning

2

- Notice Details

3

- Add up the Facts

4

- Verify your Inference

Noticing Details
Adding Up the Facts



Practice# 1:

His nails dripped with blood. With his long, raspy tongue, he licked the sticky redness from them, one after another. A hunk of fur stuck to a tooth. The contented lion stretched out under the warm African sun and fell asleep still purring.

- * Notice Details
- * Add Up Facts



1

- Understand the Literal Meaning

2

- Notice Details

3

- Add up the Facts

4

- Verify your Inference

Verification



Practice# 1:

His nails dripped with blood. With his long, raspy tongue, he licked the sticky redness from them, one after another. A hunk of fur stuck to a tooth. The contented lion stretched out under the warm African sun and fell asleep still purring.

Look, again, at the details & facts.



- Based on the details and facts, does it **make sense** that the lion ate a furry animal and then relaxed under the sun?

Verification

Practice#2:

You have just gotten a pit bull puppy from an animal shelter. He's loveable, but nervous. If you raise your voice, he cowers and trembles. If you scold him, he hides. When you got him from the shelter, he had a slight scratch across his nose.



What can you infer??

1

- Understand the Literal Meaning

2

- Notice Details

3

- Add up the Facts

4

- Verify your Inference

Understanding the Literal Meaning



Practice#2:

You have just gotten a pit bull puppy from an animal shelter. He's loveable, but nervous. If you raise your voice, he cowers and trembles. If you scold him, he hides. When you got him from the shelter, he had a slight scratch across his nose.

**Understanding the
Literal Meaning**



1

- Understand the Literal Meaning

2

- Notice Details

3

- Add up the Facts

4

- Verify your Inference

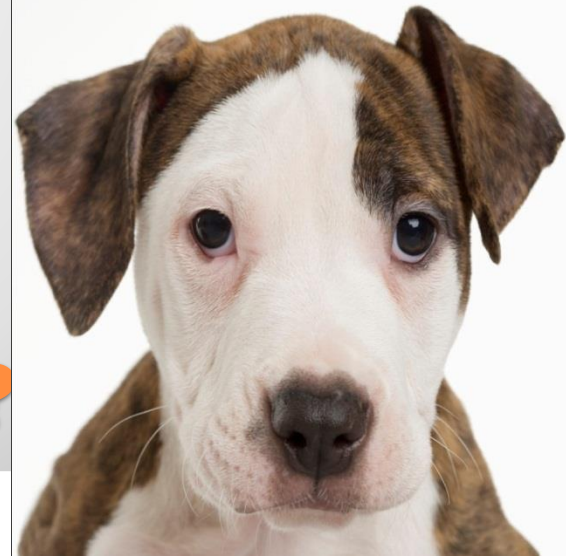
Noticing Details
Adding Up the Facts



Practice#2:

You have just gotten a pit bull puppy from an **animal shelter**. He's loveable, but **nervous**. If you raise your voice, he **cowers and trembles**. If you scold him, he **hides**. When you got him from the shelter, he had a slight **scratch across his nose**.

Did you notice details?
Did you add up the facts?



1

- Understand the Literal Meaning

2

- Notice Details

3

- Add up the Facts

4

- Verify your Inference

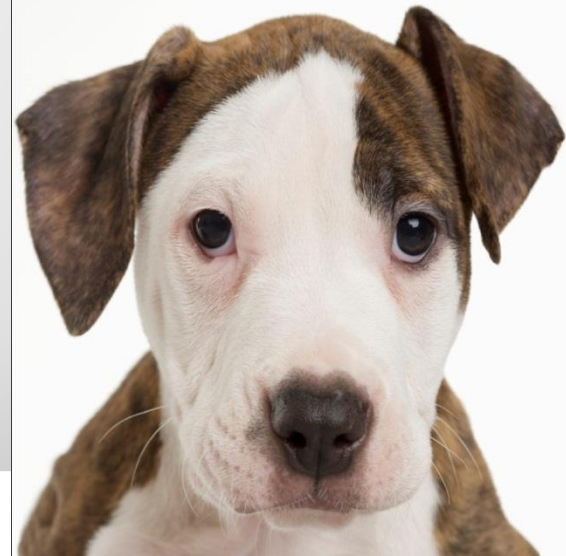
Verification



Practice#2:

You have just gotten a pit bull puppy from an **animal shelter**. He's loveable, but **nervous**. If you raise your voice, he **cowers and trembles**. If you scold him, he **hides**. When you got him from the shelter, he had a slight **scratch across his nose**.

Look, again, at the details & facts.



Based on the details and facts, does it make sense that the puppy had been abused by someone?

Verification

Practice#3:

The last power point slide is on the screen right now and the instructor is about to walk toward the computer.

What can you infer?